



A.L.P.
ALP-52
Frost Overlay

ALP-52

General Information

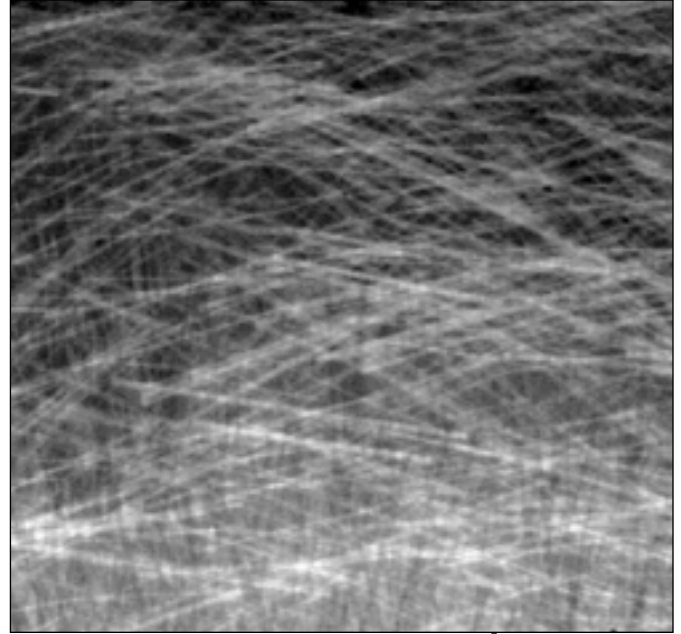
ALP-52 is a **shatterproof flat sheet**, cast from **100% acrylic, reinforced with fiberglass**. The acrylic contributes **translucent elegance, color stability** and **weatherability**. The fiberglass reinforcement gives **strength and rigidity**. The Frost Overlay is 2-1/2 times as rigid as an ordinary cast acrylic sheet and 3 times as rigid as a polycarbonate sheet.

ALP-52 panels **resemble ordinary acrylic sheet** in appearance but are extremely resistant to breakage and vandalism. Frost Overlay diffusers are a good choice for flat lighting applications because **they will not break** and have less sag than ordinary acrylic diffusers.

With a **light transmittance of 86%**, ALP-52 Frost Overlay panels suit many **indoor and outdoor applications** commonly served by flat glass.

Specifications

ALP-52 shatterproof acrylic flat sheet shall be cast from 100% methyl methacrylate monomer reinforced with fiberglass as manufactured by A.L.P. Lighting & Ceiling Products, Inc. Standard thickness shall be .045" with panel sizes of 1' x 4', 2' x 2', 2' x 4'. Light transmission of ALP-52 shall not be less than 86%.



ALP-52

CATALOG NUMBER	DESCRIPTION	THICKNESS	DIMENSIONS
Acrylic Panels			
ALP52 14FO	Frost	.045"	11-3/4" x 47-3/4"
ALP52 22FO	Frost	.045"	23-3/4" x 23-3/4"
ALP52 24FO	Frost	.045"	23-3/4" x 47-3/4"

A.L.P. can also provide panels of various thicknesses and sizes upon request. All 1' x 4' and 2' x 2' diffusers MUST be purchased in even multiples.

ASTM TEST DATA		
Flexural Strength, 73°F	D-790-49T	22,000 psi
Flexural Modulus, 73°F	D-790-49T	1,000,000 psi
Tensile Strength, 73°F	D-638-52T	14,000 psi
Compressive Strength, 73°F	D-695-54	24,000 psi
Taber Abrasion, Wt. Loss, D-1242-52T, D-1044-54T	—	30 mg/1000 cycles
Impact Strength, Izod, notched	—	6 ft.-lbs. per inch
Hardness, Rockwell	—	M-104; R-121
Hardness, Barcol	—	55
Heat Distortion Temp., 264 psi	D-648-45T	233°F
Coefficient of Linear Expansion	D-696-44	2 x 10 ⁻⁵ in. per in. per°F
Flammability (general purpose)	D-635-74	1.4 in. per min.

ALP-52 Profile

section

A (thickness): .045"

Nominal Sizes

1' x 4'
2' x 2'
2' x 4'

Colors and Materials
Frost
Acrylic/Fiberglass

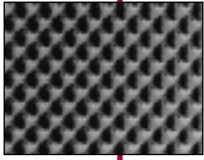
**For more information or to place an order,
 contact Customer Service.**



A.L.P.
LIGHTING COMPONENTS, INC.
 CORPORATE HQ: CHICAGO, IL U.S.A.
WEB SITE: WWW.ALP-LTG.COM

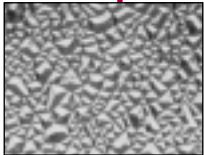
CENTRAL (Chicago) — (877) ALP-LTG1 • FAX: (800) 438-2500
WEST (Los Angeles) — (800) 545-6176 • FAX: (800) 545-6186
SOUTHEAST (Atlanta) — (404) 352-2110 • FAX: (800) 545-6192
EAST (Philadelphia) — (856) 486-0700 • FAX: (800) 545-6192
 © 1999 A.L.P. LIGHTING COMPONENTS, INC., PRINTED IN THE U.S.A., 52 068

LENS AND DIFFUSER OPTIONS



ALP-12/120-FEMALE CONICAL PRISMATIC LENS

This quality extruded acrylic or UV stabilized polystyrene lens provides very good low brightness control with excellent light output. The lens utilizes a diagonally oriented prism pattern with square inverted prisms that are optically designed to provide excellent light control. The ALP-12/120 pattern has become a standard in the industry, offering economy with quality.



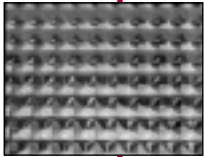
ALP-1-CRACKED ICE

The unusual UV stabilized polystyrene "cracked ice" pattern is an imaginative use of plastic panels, providing a sparkling crystal overhead affect. Non-linear in appearance, the asymmetric pattern provides complete lamp obscuration even in the shallowest plenum.



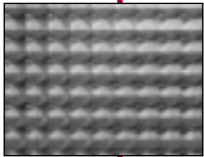
ALP-SW-SMOOTH WHITE

Smooth White Flat Sheet provides the greatest application potential in the lighting industry. These extruded smooth and crepe diffusing panels are available in acrylic or high impact light stable polystyrene, providing evenly illuminated lighting enclosures while reducing shadows and reflected glare.



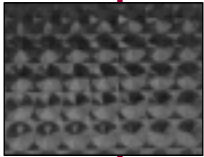
ALP-15-FEMALE CONICAL PRISMATIC LENS

The ALP-15 is an extruded acrylic lens with a large 3/8" square pattern design that renders a bold, well ordered look that hides the lamps from direct view. The recessed female conical pattern provides maximum strength to weight ratios for oversized areas up to 48" square. The lens is an ideal prismatic lens where the bolder prism pattern is desired.



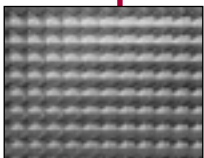
ALP-19-MALE CONICAL PRISMATIC LENS

This is the finest in extruded acrylic lenses offering superior lamp obscuration and excellent source brightness control. The small square base male prisms are organized in a parallel pattern providing a discrete and tailored appearance. The ALP-19 lens offers the crisp appearance and the optical preciseness often associated with injection molded lenses with the economies of the extruded lens.



ALP-23-FEMALE CONICAL CIRCULAR BASE PRISMS

The ALP-23 acrylic lenses have female conical circular base prisms of 3/8" diameter running parallel and perpendicular to the length and width of the panel. The female arcuate pyramids form a network which provides maximum resistance to sagging. It is the most uniform and efficient prismatic lens currently in production for the lighting industry.



ALP-41-SECURITY-PRISMATIC LENS

ALP-41 is utilized in areas where vandalism or damage may be a problem because it is virtually indestructible. This lens protects lighting fixtures by sonic welding a .187" clear polycarbonate panel and a .187" clear prismatic ALP-12 acrylic lens.

**For more information
or Data Sheet contact Customer Service.**