



A.L.P.
ALP-19
Male Conical Prismatic Lens

ALP-19

General Information

ALP-19 is the finest in **extruded lenses** offering **superior lamp obscuration** and excellent source **brightness control**. The small square base male prisms are organized in a **parallel pattern** providing a **discreet and tailored appearance**. ALP-19 lenses offer the crisp appearance and the optical preciseness, often associated with injection molded lenses, with the **economies of the extruded lens**.

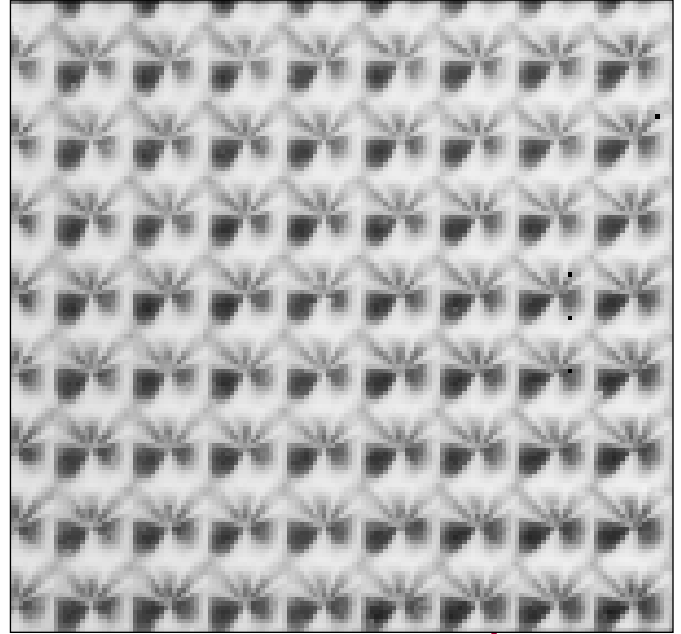
Approved by Major Building Codes

A.L.P. lighting panels meet all requirements for approval of **acrylic plastic for use as light diffusers and lenses as specified in building codes** throughout the country.

A typical approval (by State of Michigan) attests to conformance of acrylic material from which an A.L.P. lens is produced, to standards for burn rates and smoke density tested in accordance to ASTM standards. Approvals include use for such applications as schools, hospitals and nursing homes.

A.L.P. Acrylic Material Meets or Exceeds Recognized Standards

The acrylic used in A.L.P. prismatic lighting panels is 100% high molecular weight virgin material meeting grade 8 requirements as set forth in table 2 of ASTM D-788-69a. It exceeds IES-NEMA-SPI standards for acrylic material by 100%. Under normal interior conditions these panels will perform satisfactorily for 20 years.



ALP-19

ALP-19 Profile

section

A (thickness): .156", .187"

Nominal Sizes

1' x 4'
2' x 2'
2' x 4'
4' x 4'

Colors and Materials

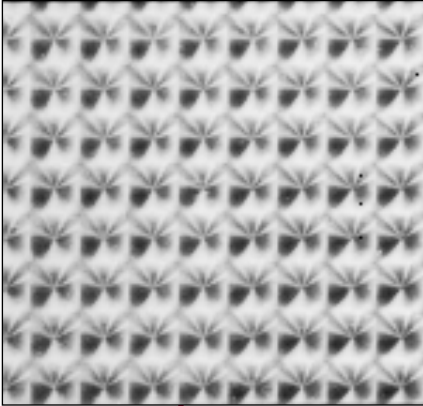
Clear
White
Acrylic

CATALOG NUMBER	DESCRIPTION	THICKNESS	DIMENSIONS
Acrylic Panels			
ALP19 14CA	Clear	.156"	11-3/4" x 47-3/4"
ALP19 22CA	Clear	.156"	23-3/4" x 23-3/4"
ALP19 24CA	Clear	.156"	23-3/4" x 47-3/4"
ALP19 50X51CA	Clear	.156"	50" x 51"
ALP19 14CA187	Clear	.187"	11-3/4" x 47-3/4"
ALP19 22CA187	Clear	.187"	23-3/4" x 23-3/4"
ALP19 24CA187	Clear	.187"	23-3/4" x 47-3/4"

Other available color: White (W)
 Minimum quantities for colored lenses may apply, contact A.L.P. for details.
 *Shipment of oversize lenses are subject to a special packaging charge.
 Special sizes are available, contact A.L.P.

**For more information, or to place an order,
 contact Customer Service.**

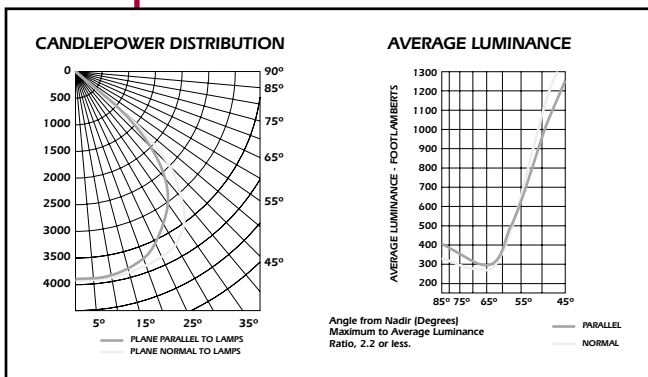
ALP-19 PHOTOMETRICS



Specifications

ALP-19 lenses shall be clear acrylic as manufactured by A.L.P. Lighting Components, Inc. Prisms shall be 3/16" square based male cones aligned parallel and perpendicular to the length and width of the panel. Minimum prism height shall be .080". In a nominal 2' x 4' fixture with four, 40 watt lamps each rated at 3200 lumens, minimum luminaire efficiency shall be 68%. Maximum average luminance in the 65° - 85° zone shall be 525 footlamberts. The ratio of maximum to average luminance shall be 2.2 or less at 0° nadir.

CLEAR Building Acoustics and Lighting Laboratories, Inc. Report No. 5058.0, 7/6/87. ALP-19 Clear Acrylic Lens .156". Nadir Candlepower 3956.



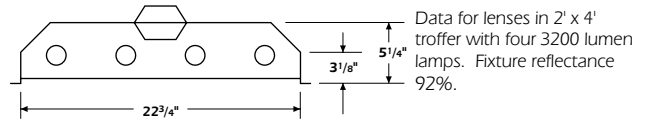
COEFFICIENTS OF UTILIZATION ZONAL CAVITY METHOD

FLOOR	20%						
	80%				50%		
CEILING							
WALLS	70%	50%	30%	10%	50%	30%	10%
1	.75	.72	.70	.68	.68	.66	.65
2	.70	.65	.62	.59	.62	.59	.57
3	.65	.59	.55	.51	.56	.53	.50
4	.60	.54	.49	.45	.51	.47	.44
5	.56	.49	.43	.40	.47	.42	.39
6	.52	.44	.39	.35	.42	.38	.35
7	.48	.40	.35	.31	.39	.34	.31
8	.44	.36	.31	.28	.35	.30	.27
9	.41	.33	.28	.24	.31	.27	.24
10	.38	.30	.25	.21	.29	.24	.21

To determine Coefficients of Utilization for 2-lamp luminaire, multiply figures shown by 1.08. For 3-lamp luminaire, multiply by 1.04. I.E.S. Spacing Criteria: End 1.3, Diagonal 1.3, Cross 1.4.

EFFICIENCY	
DEGREE	PERCENT
0-40°	41.3%
0-60°	61.5%
0-90°	66.9%

Commercially Available Troffer



Visual Comfort Probability Table

CLEAR ACRYLIC									
From B.A.L.L. Report No. 5058									
100 F.C. ROOM		REFLECTANCES 80/50/20							
		LENGTHWISE				CROSSWISE			
W	L	8.5	10	13	16	8.5	10	13	16
20	20	73	74	77	78	74	75	77	77
20	30	68	70	75	74	69	71	77	75
20	40	64	67	70	71	66	68	72	73
20	60	62	64	67	69	64	65	69	70
30	20	74	76	77	78	75	76	77	77
30	30	68	71	72	72	69	71	73	73
30	40	64	67	69	69	65	67	70	70
30	60	61	63	65	66	62	64	66	68
30	80	59	61	62	64	61	63	64	65
40	20	76	77	78	78	77	78	79	78
40	30	69	72	73	72	70	72	74	73
40	40	65	67	69	69	66	68	70	70
40	60	61	63	65	66	63	64	66	67
40	80	59	61	62	63	61	62	63	64
40	100	58	59	60	61	61	62	62	62
60	30	70	73	74	74	71	73	75	74
60	40	65	68	69	70	66	68	70	71
60	60	61	63	64	66	63	64	65	67
60	80	59	61	61	62	61	62	62	63
60	100	58	59	59	60	60	61	61	61
100	40	68	70	71	72	69	70	72	73
100	60	64	65	66	68	65	66	67	68
100	80	61	63	62	64	63	64	63	64
100	100	59	60	60	61	61	62	61	62



A.L.P.
LIGHTING COMPONENTS, INC.
CORPORATE HQ: CHICAGO, IL U.S.A.
WEB SITE: WWW.ALP-LTG.COM

CENTRAL (Chicago) — (877) ALP-LTG1 • FAX: (800) 438-2500
WEST (Los Angeles) — (800) 545-6176 • FAX: (800) 545-6186
SOUTHEAST (Atlanta) — (404) 352-2110 • FAX: (800) 545-6192
EAST (Philadelphia) — (856) 486-0700 • FAX: (800) 545-6192

© 1999 A.L.P. LIGHTING COMPONENTS, INC., PRINTED IN THE U.S.A., 19 078